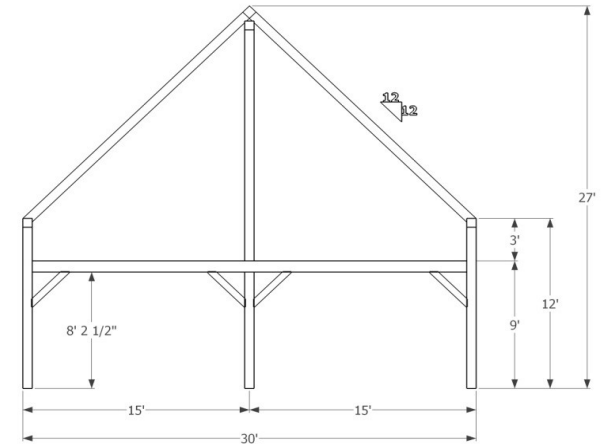
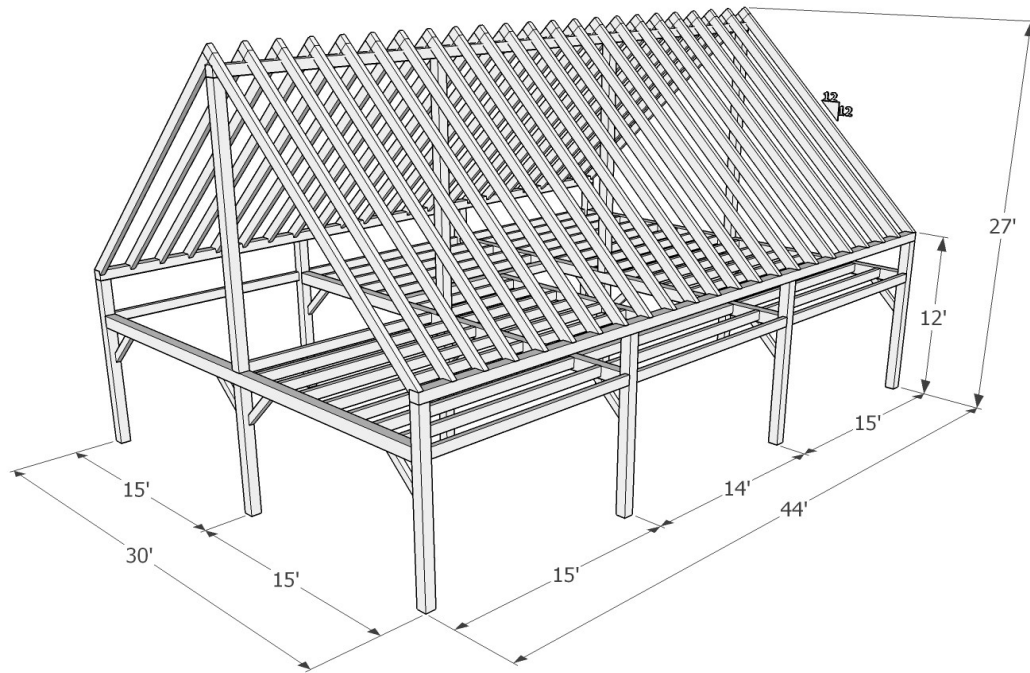
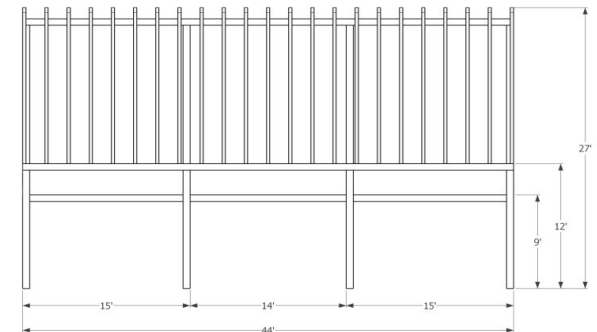


The PETWORTH Series - 30' x 44'



Bent View



Side View

Taking advantage of the timber ridge beam to make a 30' wide building. This frame package is a simple timber frame doing great things. With an 1320 ft² footprint, it is large enough to be a complete home or cottage. With ample loft space, the total living area is 2,320 ft². It can also be built with optional dormers to bring more natural light into the upper floor loft space.

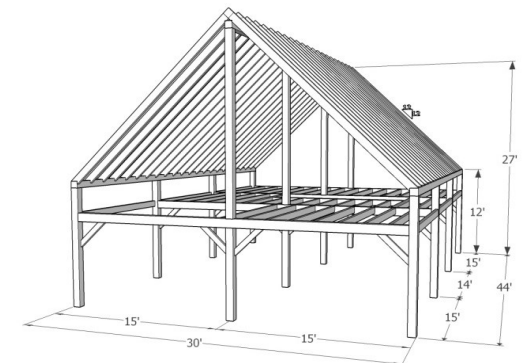
	<u><i>E. White Pine</i></u>	<u><i>Douglas Fir FoHC</i></u>	
<u>Shop Work & Design:</u>	\$61,680.00	\$78,300.00	
<u>Delivery & Installation starting at*:</u>	\$27,210.00	\$27,210.00	
Total:	\$88,890.00	\$105,510.00	+hst

+Add optional V-Joint decking installed on ceilings & lofts: please contact us for details and pricing

<u>Details:</u>	
Sanding of timbers:	Yes
Clear oil based stain:	Yes
Engineering of timber work:	Yes
Timber frame footprint (sq.ft.)	1,320.0
Total living space w/ loft (sq. ft.)	2,320.0



1948 Sharpe's Lane, Brockville, ON K6V 5T1
 Office: (613) 498-2406 / Cell: (613) 803-3241
www.gibson timber frames.com
info@gibson timber frames.com



^ Please contact us for details and current pricing.

* Within 100km of our shop. Delivery and Installation costs may increase at greater distances.