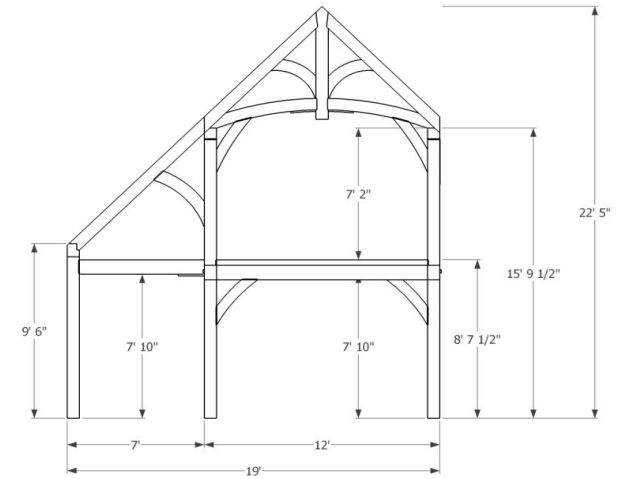
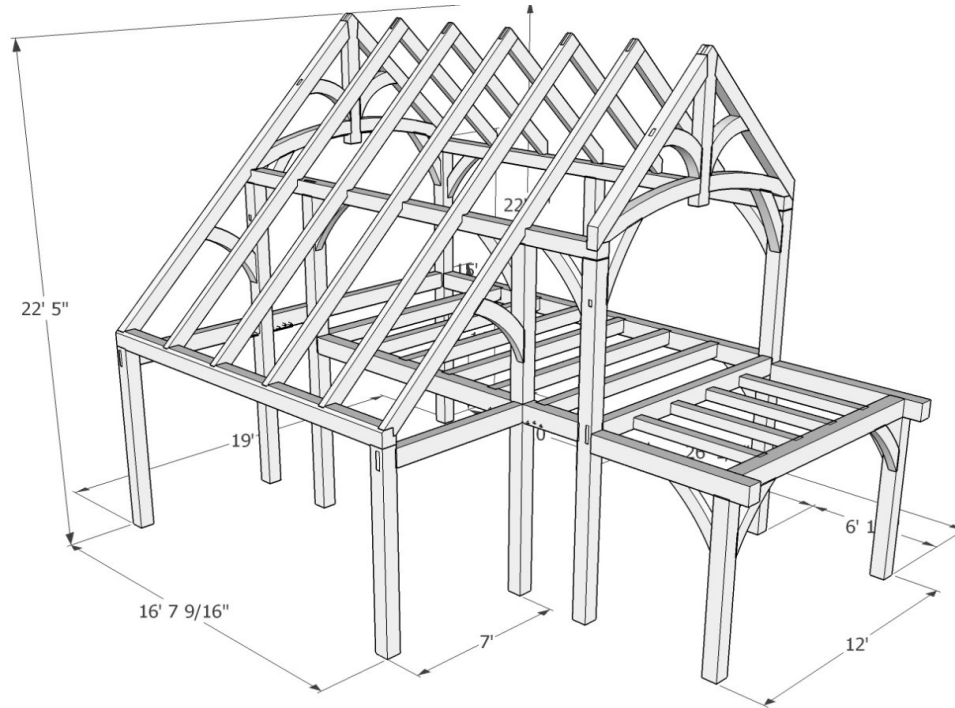
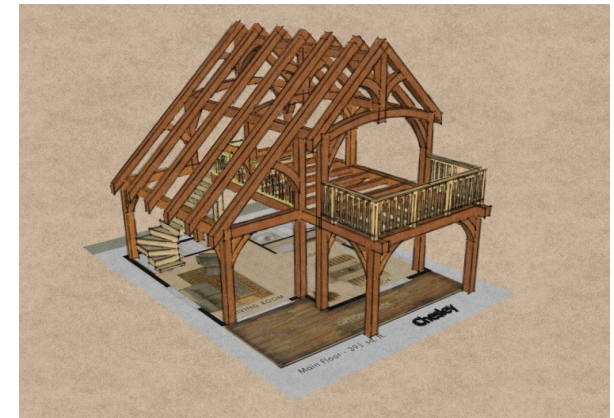


The CHESLEY - 19' x 20'



Bent View



Artist Conception

A stylish timber frame Bunkie designed in partnership with Perth Home Hardware and Beaver Homes & Cottages. This frame has a footprint of 356 ft², with a total living area of 620 ft² including loft and deck.

	<u><i>E. White Pine</i></u>	<u><i>Douglas Fir FoHC</i></u>	
<i>Shop Work & Design:</i>	\$42,995.00	\$50,710.00	
<u><i>Delivery & Installation starting at*:</i></u>	<u>\$18,455.00</u>	<u>\$18,455.00</u>	
Total:	\$61,450.00	\$69,165.00	+hst

+Add optional V-Joint decking installed on ceilings & lofts: please contact us for details and pricing

<u>Details:</u>	
<i>Sanding of timbers:</i>	Yes
<i>Clear oil based stain:</i>	Yes
<i>Engineering of timber work:</i>	Yes
<i>Timber frame footprint (sq.ft.)</i>	356.0
<i>Total living space (sq. ft.)</i>	620.0



1948 Sharpe's Lane, Brockville, ON K6V 5T1
 Office: (613) 498-2406 / Cell: (613) 803-3241
www.gibson timber frames.com
info@gibson timber frames.com

* Within 100km of our shop. Delivery and Installation costs may increase at greater distances.

^ Please contact us for details and current pricing.