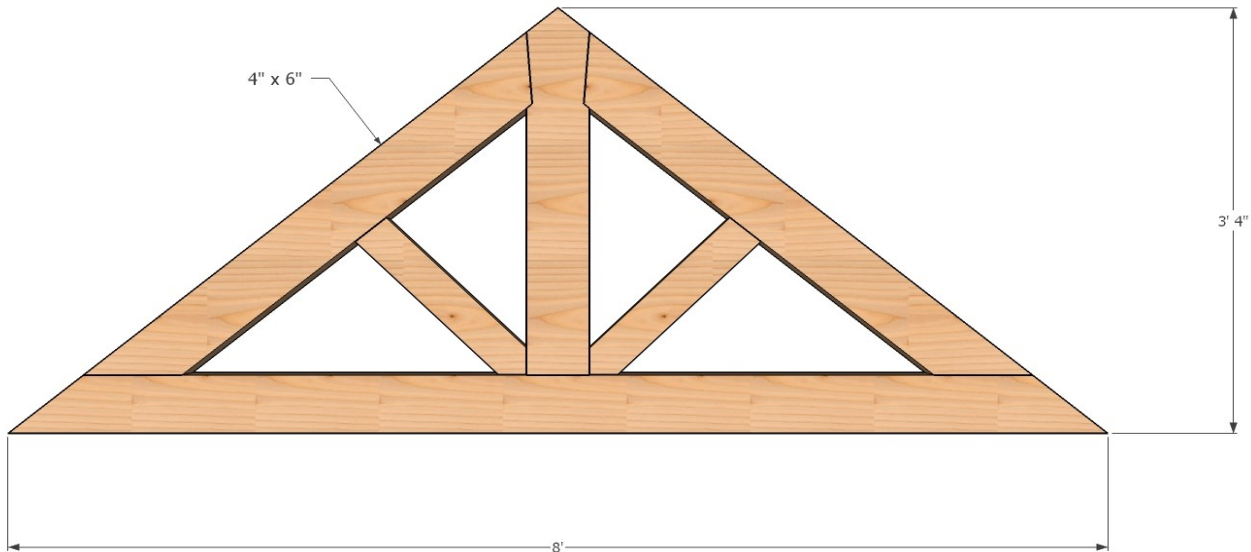




1948 Sharpe's Lane, Brockville, ON K6V 5T1
 Office: (613) 498-2406 / Cell: (613) 803-3241
www.gibson timber frames.com
info@gibson timber frames.com

Project: Gable King Post Trusses (Qty=4)
Location: S. Frontenac. ON
Original estimate date: February 2022

	<u><i>E. White Pine</i></u>	<u><i>Douglas Fir FoHC</i></u>	
<i>Shop Work & Design:</i>	\$6,160.00	\$6,705.00	
<u><i>Delivery & Installation:</i></u>	<u>\$3,500.00</u>	<u>\$3,500.00</u>	
Total:	\$9,660.00	\$10,205.00	+hst



Qty = 4

Details:
 Sanding of timbers: Yes
 Clear oil based stain: Yes
 Engineering of timber work: No

* Please contact us for current pricing.