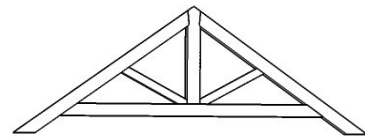
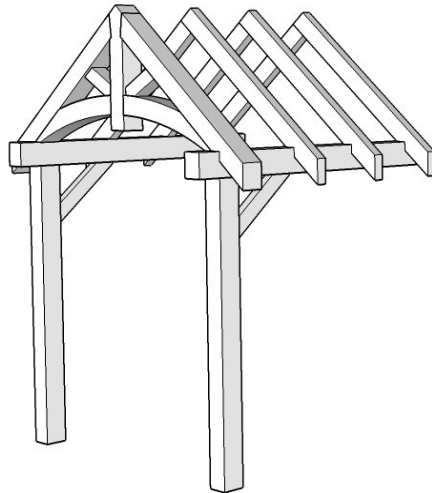




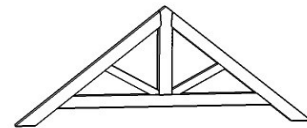
1948 Sharpe's Lane, Brockville, ON K6V 5T1  
 Office: (613) 498-2406 / Cell: (613) 803-3241  
[www.gibson timber frames.com](http://www.gibson timber frames.com)  
[info@gibson timber frames.com](mailto:info@gibson timber frames.com)

**Project:** Front Entry & Gable Trusses (x6)  
**Location:** Thousand Islands, ON  
**Original estimate date:** September 2022

	<u><i>E. White Pine</i></u>	<u><i>Douglas Fir FoHC</i></u>	
<i>Shop Work &amp; Design:</i>	\$27,525.00	\$30,775.00	
<u><i>Delivery &amp; Installation:</i></u>	<u>\$14,595.00</u>	<u>\$14,595.00</u>	
<b><i>Total:</i></b>	<b><i>\$42,120.00</i></b>	<b><i>\$45,370.00</i></b>	<i>+hst</i>



Qty = 1



Qty = 5

<u><i>Decking installed on the ceilings:</i></u>	<u>\$2,780.00</u>	<u>\$3,140.00</u>	
<b><i>Total with Decking:</i></b>	<b><i>\$44,900.00</i></b>	<b><i>\$48,510.00</i></b>	<i>+hst</i>

*Details:*

<i>Sanding of timbers:</i>	Yes
<i>Clear oil based stain:</i>	Yes
<i>Engineering of timber work:</i>	Yes

\* Please contact us for current pricing.