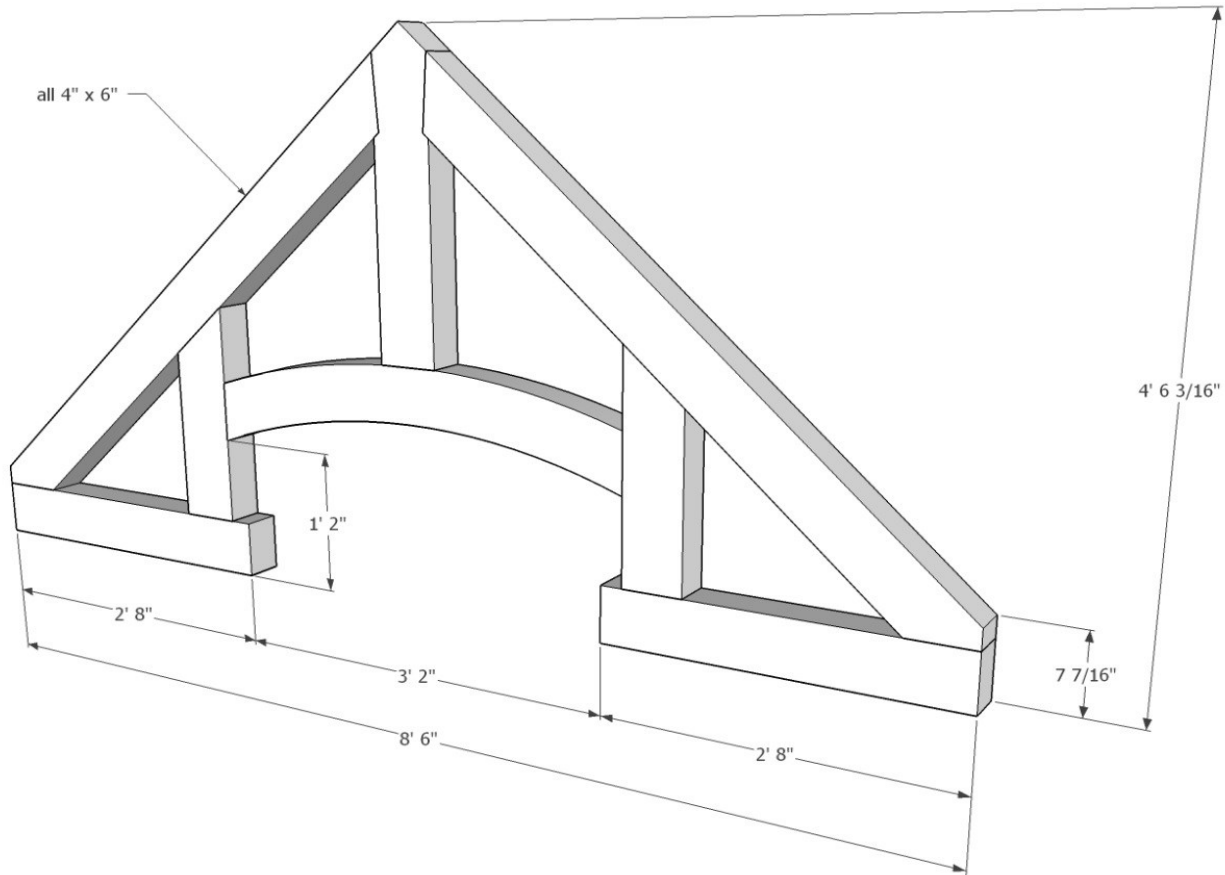




1948 Sharpe's Lane, Brockville, ON K6V 5T1
 Office: (613) 498-2406 / Cell: (613) 803-3241
www.gibson timber frames.com
info@gibson timber frames.com

Project: 8' - 6" Hammer Beam Truss, Curved Collar Tie
Location: Kingston, ON
Original estimate date: February 2020

	<u><i>E.White Pine</i></u>	<u><i>Douglas Fir FoHC</i></u>	
<i>Shop Work & Design:</i>	\$4,040.00	\$4,230.00	
<u><i>Delivery & Installation:</i></u>	<u>\$1,900.00</u>	<u>\$1,900.00</u>	
Total:	\$5,940.00	\$6,130.00	+hst



Details:
 Sanding of timbers: Yes
 Clear oil based stain: Yes
 Engineering of timber work: No

* Please contact us for current pricing.