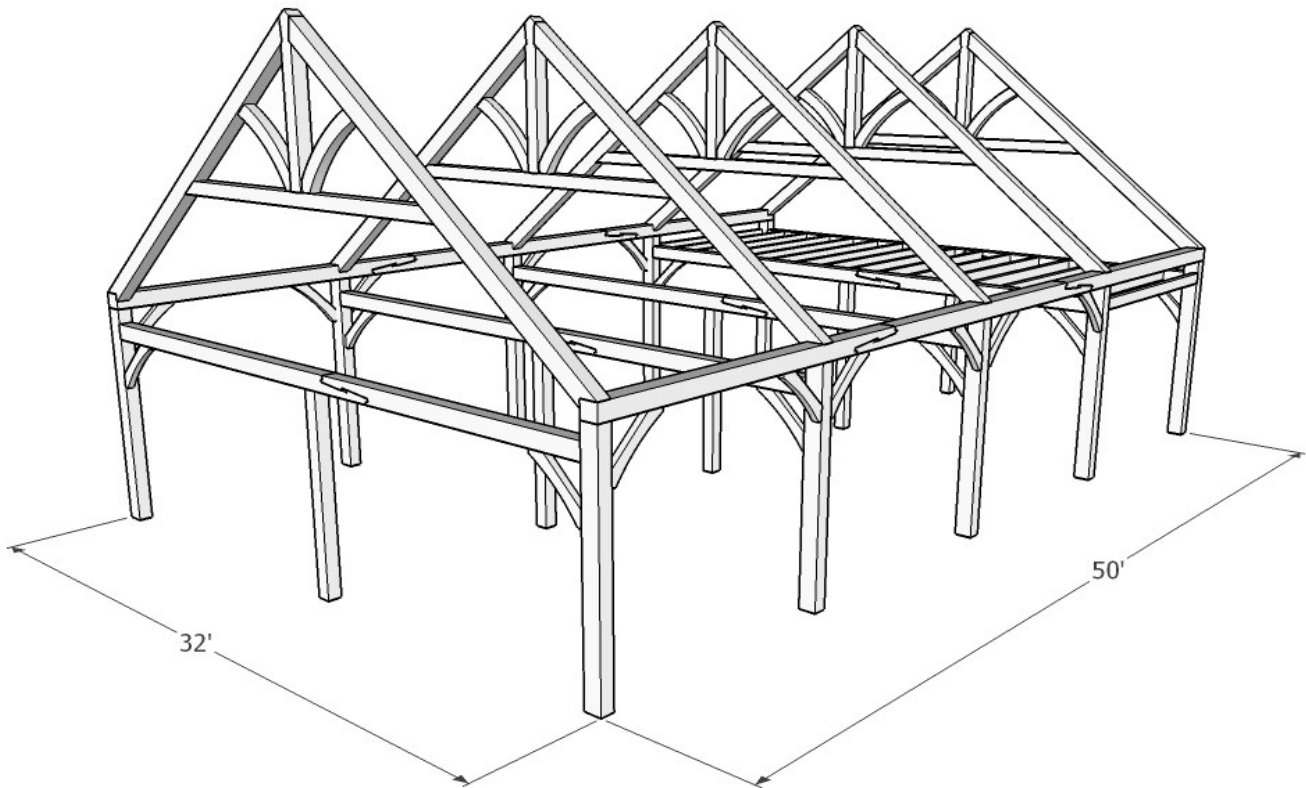




1948 Sharpe's Lane, Brockville, ON K6V 5T1
 Office: (613) 498-2406 / Cell: (613) 803-3241
www.gibson timber frames.com
info@gibson timber frames.com

Project: 32' x 50' Great Room w/ King Post Trusses
Location: Cornwall, ON
Original estimate date: February 2020

	<u>Eastern White Pine</u>	<u>Western Douglas Fir</u>	
<i>Shop Work & Design:</i>	\$54,385.00	\$69,990.00	
<i>Delivery & Installation:</i>	<u>\$19,615.00</u>	<u>\$19,615.00</u>	
Total:	\$74,000.00	\$89,605.00	+hst



<u>Details:</u>	
Sanding of timbers:	Yes
Clear oil based stain:	Yes
Engineering of timber work:	Yes
Timber frame footprint (sq.ft.)	1,600.0
Total living space w/ loft (sq. ft.)	1,975.0

* Please contact us for current pricing.