

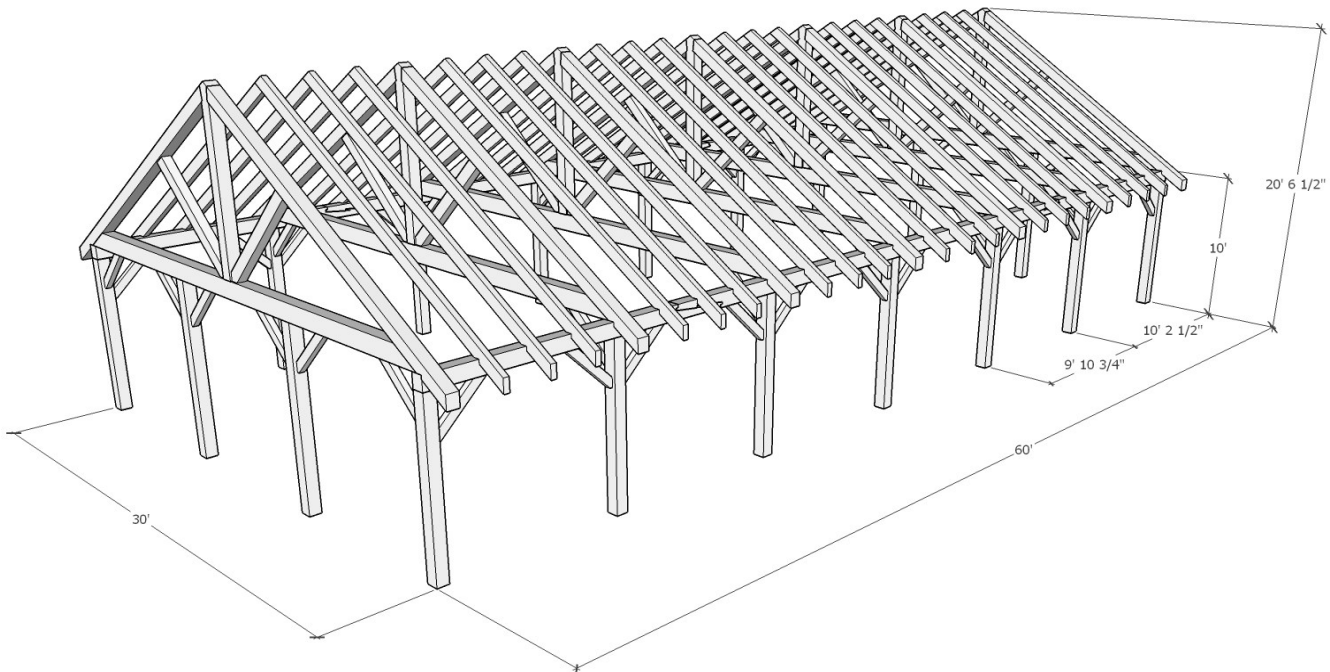


1948 Sharpe's Lane, Brockville, ON K6V 5T1  
 Office: (613) 498-2406 / Cell: (613) 803-3241

[www.gibson timber frames.com](http://www.gibson timber frames.com)  
[info@gibson timber frames.com](mailto:info@gibson timber frames.com)

**Project:** 30' x 60' Farm Pavilion w/ King Post Trusses  
**Location:** Ottawa, ON  
**Original estimate date:** July 2021

	<u><i>E. White Pine</i></u>	<u><i>Douglas Fir FoHC</i></u>	
<i>Shop Work &amp; Design:</i>	\$77,930.00	\$97,305.00	
<u><i>Delivery &amp; Installation:</i></u>	<u>\$32,800.00</u>	<u>\$32,800.00</u>	
<b>Total:</b>	<b>\$110,730.00</b>	<b>\$130,105.00</b>	+hst



Details:

Sanding of timbers:	Yes
Clear oil based stain:	Yes
Engineering of timber work:	Yes
Timber frame footprint (sq.ft.)	1,800.0

\* Please contact us for current pricing.