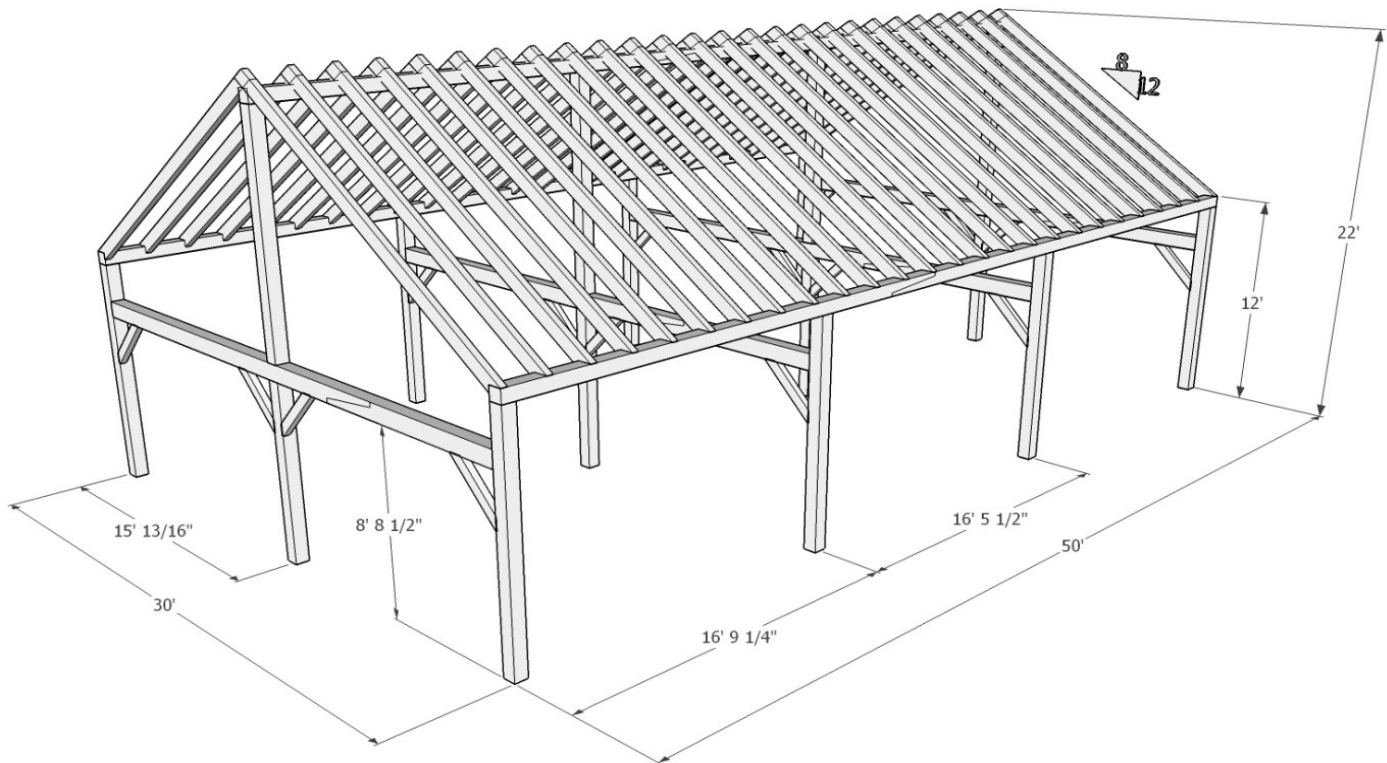




1948 Sharpe's Lane, Brockville, ON K6V 5T1
 Office: (613) 498-2406 / Cell: (613) 803-3241
www.gibson timber frames.com
info@gibson timber frames.com

Project: 30' x 50' King Post Barn / Warehouse
Location: Prince Edward County, ON
Original estimate date: April 2018

	<i>E. White Pine</i>	<i>Douglas Fir FoHC</i>	
Shop Work & Design:	\$46,755.00	\$59,990.00	
Delivery & Installation:	\$22,335.00	\$22,335.00	
Total	\$69,090.00	\$82,325.00	+hst



Details:

Sanding of timbers:	Yes
Clear oil based stain:	Yes
Engineering of timber work:	Yes
Timber frame footprint (sq. ft.)	1500.0

* Please contact us for current pricing.