



1948 Sharpe's Lane, Brockville, ON K6V 5T1

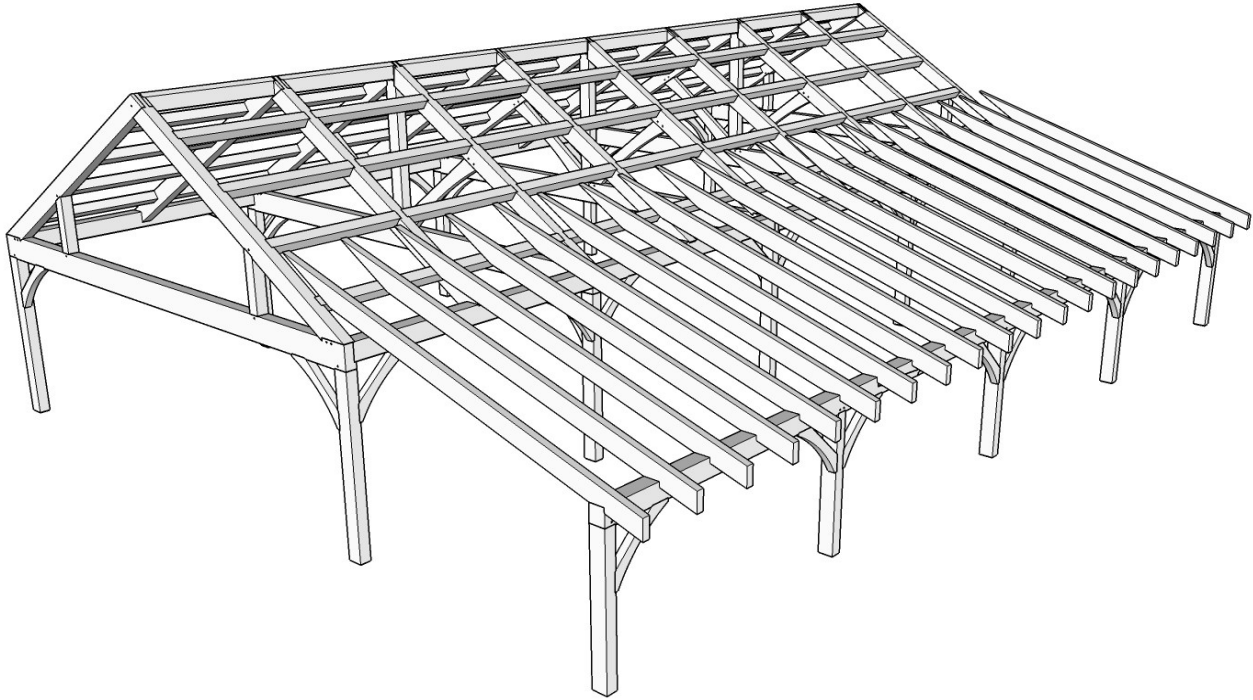
Office: (613) 498-2406 / Cell: (613) 803-3241

www.gibson timber frames.com

info@gibson timber frames.com

Project: 24' x 50' Pavillion w/ 12' x 50' Lean-To Porch
Location: Hastings County, ON
Original estimate date: March 2022

	<u><i>E. White Pine</i></u>	<u><i>Douglas Fir FoHC</i></u>	
<i>Shop Work & Design:</i>	\$67,975.00	\$84,600.00	
<u><i>Delivery & Installation:</i></u>	<u>\$36,505.00</u>	<u>\$36,505.00</u>	
<i>Total:</i>	<i>\$104,480.00</i>	<i>\$121,105.00</i>	<i>+hst</i>



<u><i>add decking installed on the ceilings:</i></u>	<u><i>\$34,300.00</i></u>	<u><i>\$41,695.00</i></u>	
<i>Total with Decking:</i>	<i>\$138,780.00</i>	<i>\$162,800.00</i>	<i>+hst</i>

Details:

<i>Sanding of timbers:</i>	Yes
<i>Clear oil based stain:</i>	Yes
<i>Engineering of timber work:</i>	Yes
<i>Timber frame footprint (sq.ft.)</i>	1,200.0
<i>Total living space w/ porch (sq. ft.)</i>	1,800.0

* Please contact us for current pricing.

24' x 50' King Truss with 12' Lean-To_2022nos.xlsx