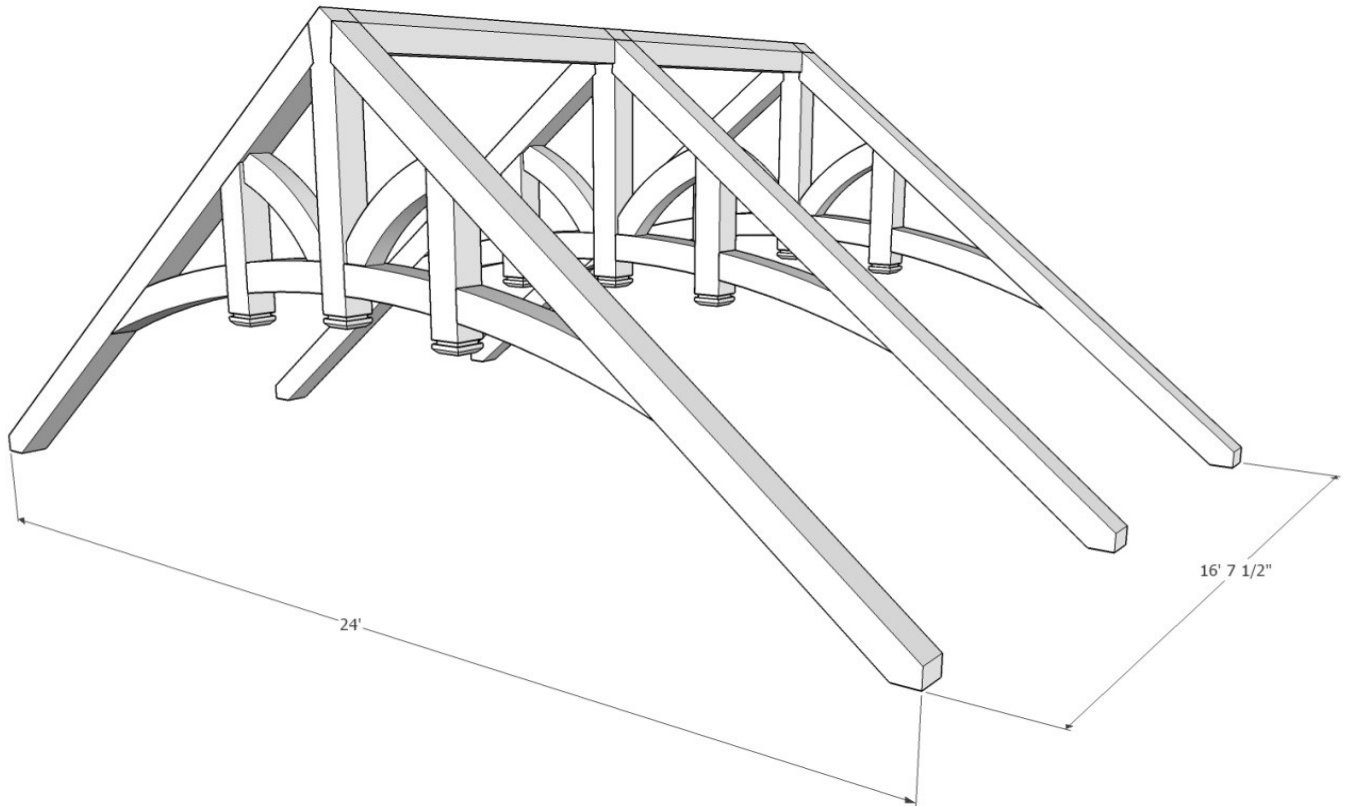




1948 Sharpe's Lane, Brockville, ON K6V 5T1  
 Office: (613) 498-2406 / Cell: (613) 803-3241  
[www.gibson timber frames.com](http://www.gibson timber frames.com)  
[info@gibson timber frames.com](mailto:info@gibson timber frames.com)

**Project:** 24' Interior Trusses w/ King & Queen Posts (Qty=3)  
**Location:** Muskoka, ON  
**Original estimate date:** January 2020

	<u><i>E.White Pine</i></u>	<u><i>Douglas Fir FoHC</i></u>	
<i>Shop Work &amp; Design:</i>	\$18,425.00	\$21,835.00	
<i>Delivery &amp; Installation:</i>	\$6,785.00	\$6,785.00	
<b>Total:</b>	<b>\$25,210.00</b>	<b>\$28,620.00</b>	+hst



Details:  
 Sanding of timbers: Yes  
 Clear oil based stain: Yes  
 Engineering of timber work: Yes

\* Please contact us for current pricing.