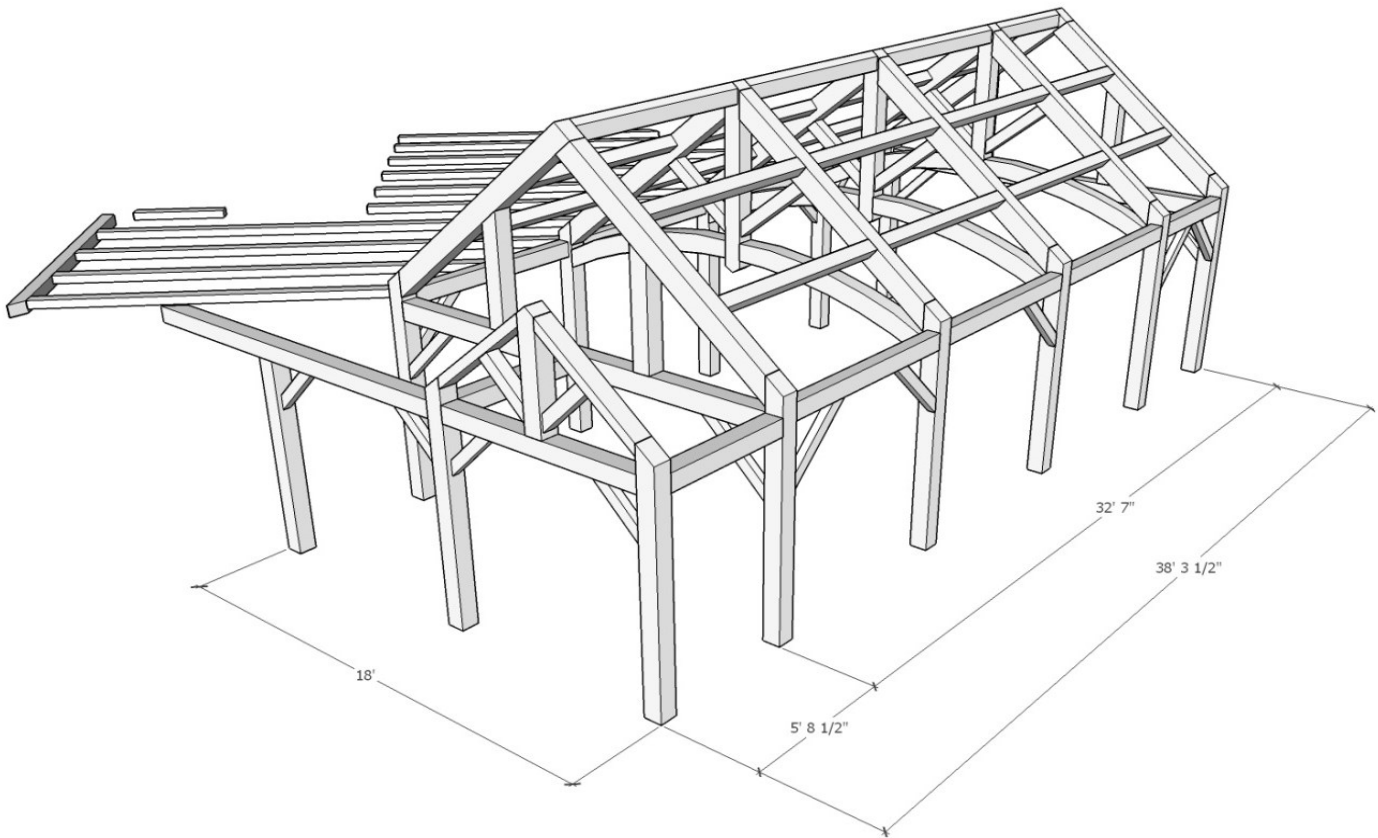




1948 Sharpe's Lane, Brockville, ON K6V 5T1
 Office: (613) 498-2406 / Cell: (613) 803-3241
www.gibson timber frames.com
info@gibson timber frames.com

Project: 18' x 32' Great Room, Entry & Kitchen Beams
Location: Arden, ON
Original estimate date: August 2016

	<u><i>E. White Pine</i></u>	<u><i>W. Douglas Fir</i></u>	
<i>Shop Work & Design:</i>	\$44,380.00	\$56,510.00	
<i>Delivery & Installation:</i>	<u>\$15,510.00</u>	<u>\$15,510.00</u>	
Total:	\$59,890.00	\$72,020.00	+hst



Details:

Sanding of timbers:	Yes
Clear oil based stain:	Yes
Engineering of timber work:	Yes
Timber frame footprint (sq.ft.)	586.0

* Please contact us for current pricing.