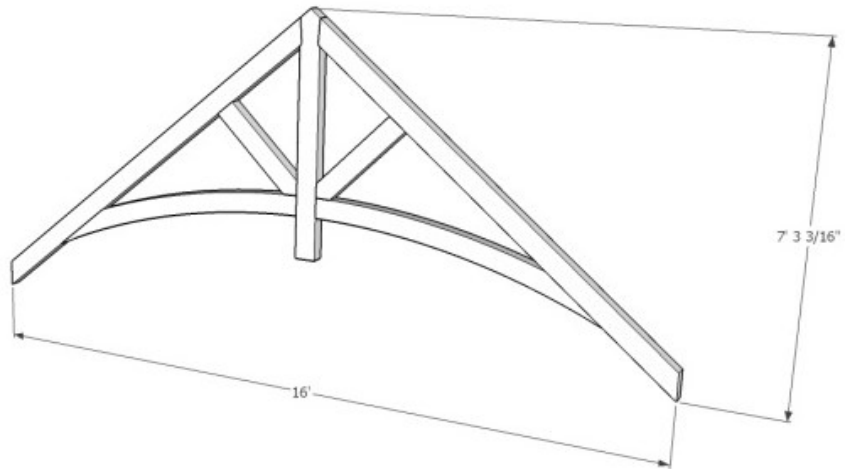
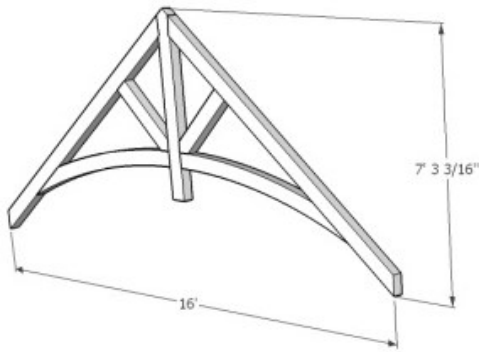




1948 Sharpe's Lane, Brockville, ON K6V 5T1
 Office: (613) 498-2406 / Cell: (613) 803-3241
www.gibson timber frames.com
info@gibson timber frames.com

Project: 16' King Post Gable Trusses w/ Curved Ties
Location: Ottawa, ON
Original estimate date: June 2020

	<u><i>E. White Pine</i></u>	<u><i>Douglas Fir FoHC</i></u>	
<i>Shop Work & Design:</i>	\$3,525.00	\$4,165.00	
<u><i>Delivery & Installation:</i></u>	<u>\$2,660.00</u>	<u>\$2,660.00</u>	
Total:	\$6,185.00	\$6,825.00	+hst



Details:

Sanding of timbers: Yes
 Clear oil based stain: Yes
 Engineering of timber work: No

* Please contact us for current pricing.