

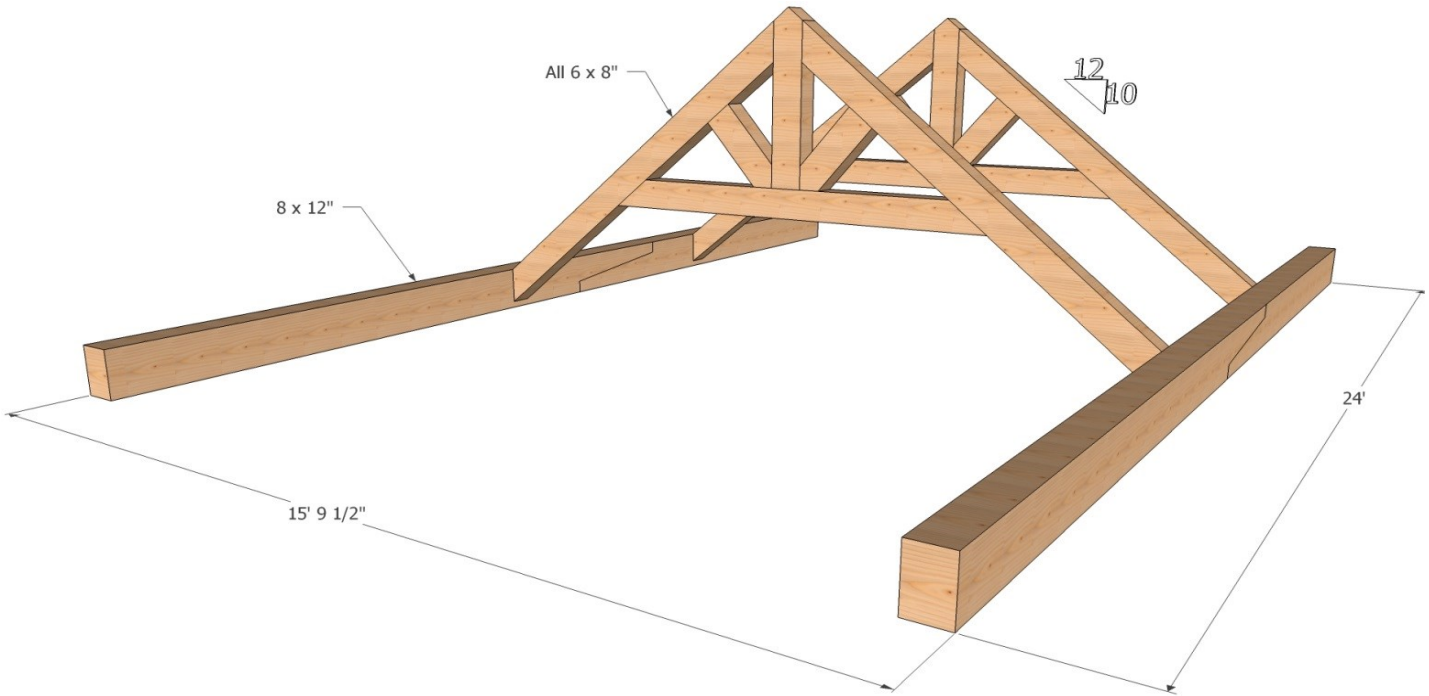


1948 Sharpe's Lane, Brockville, ON K6V 5T1
Office: (613) 498-2406 / Cell: (613) 803-3241
www.gibson timber frames.com
info@gibson timber frames.com

Project: 15' - 9-1/2" Great Room Trusses & Beams
Location: Perth, ON
Original estimate date: January 2019

Reclaimed Douglas Fir

<u>Shop Work & Design:</u>	\$13,260.00	
<u>Delivery & Installation:</u>	\$4,180.00	
<u>Total:</u>	\$17,440.00	+hst



<u>Details:</u>	
Sanding of timbers:	Yes
Clear oil based stain:	Yes
Engineering of timber work:	Yes

* Please contact us for current pricing.