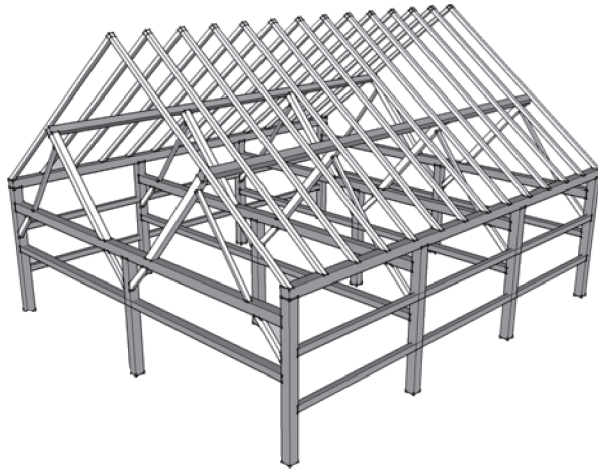
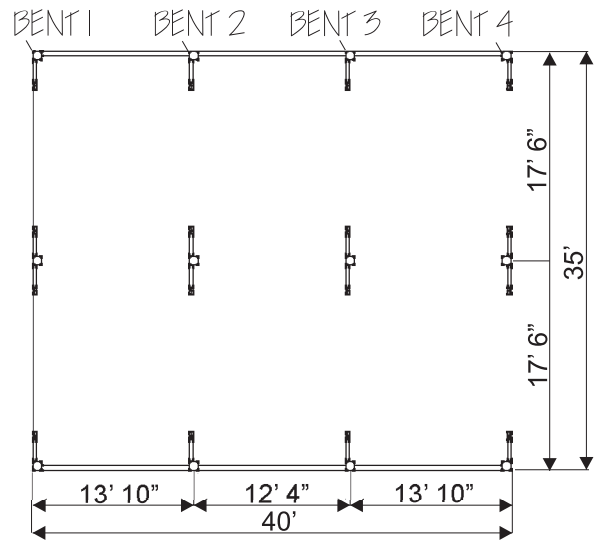


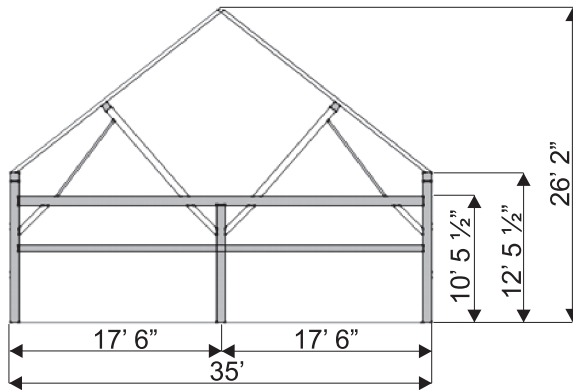
The FERGUSON BARN



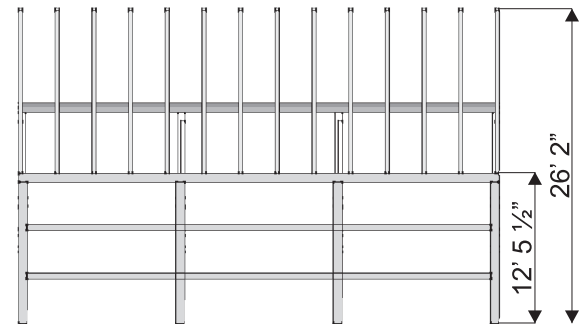
PERSPECTIVE



FLOOR PLAN



BENT VIEW



SIDE VIEW

An antique barn found by Gibson Timber Frames is ready to become a new home, cottage or commercial space.

The 35-foot by 40-foot softwood timber frame is in excellent original condition. The company has dismantled it and prepared it for resale as a new building. The price is \$55,000, which includes engineered drawings for a building permit and installing it anywhere within 200 kilometres of Gibson's shop in Harrowsmith, Ontario. "This timber frame is special because of its well maintained roof," says company president Jason Gibson. "There are barns all over the local countryside but it is rare to find a barn with a roof that has been so well cared for. The roof has kept water out of the barn, leaving the timber in excellent condition.

Built in the late 1800's near Carleton Place, the barn is an example of a canted queen style timber frame where the upper posts are angled to allow room for the hay fork and track. All of the main timbers are hand hewn by people skilled in squaring timbers with axes.

This is a typical style seen across Eastern Ontario and in New York State.

GIBSON

TIMBER ■ FRAMES

www.gibson timber frames.com

